

Source URL: <http://emacinc.com/content/ppc-10-3354-arm-panel-pc>

## PPC-10-3354 ARM Panel PC

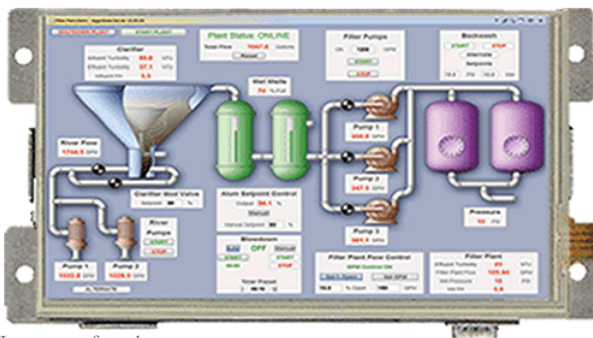
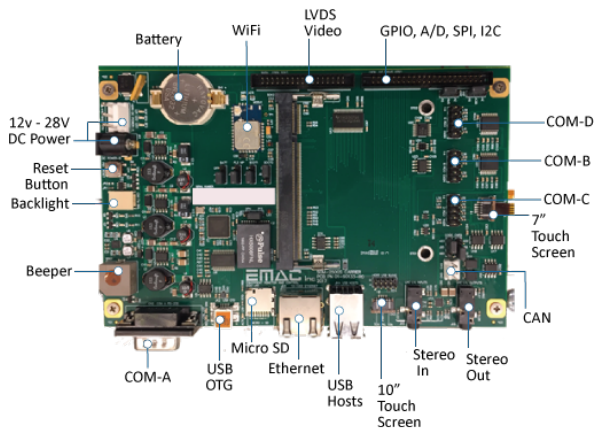


Image not found  
[www.emacinc.com/sites/default/files/EMAC%20OEM%20LOGO\\_28.png](http://www.emacinc.com/sites/default/files/EMAC%20OEM%20LOGO_28.png)

- Texas Instruments AM 3354 1.0GHz ARM Cortex A8 based Processor
- Up to 512MB DDR3L of SDRAM
- 4GB of eMMC Flash
- 16MB serial data flash
- 10/100 BaseT Ethernet with on-board PHY
- Wireless 802.11 b/g/n; Bluegiga [WF111-E] onboard (WiFi Antenna and Cable Optional)
- 3x RS232 & 1 RS232/422/485 Port
- 2x USB 2.0 (High Speed) Host ports
- 1x USB 2.0 (High Speed) OTG port
- Battery backed Real Time Clock
- 1 Micro-SD Flash Card Socket
- 1x I2S Audio port with Stereo Line-In/Line-Out
- Timer/Counters and Pulse Width Modulation (PWM) ports
- 4x Channel 10-bit Analog-to-Digital converter
- Operating Voltage of 12 to 28 Vdc.
- Graphic LCD Interface with optional 2D acceleration & hardware CODECs
- 10" WSVGA (1024 x 600) Resolution with LED Backlight
- Touchscreen Interface and Software Controlled Backlight On/Off & Brightness
- JTAG for debug, including real-time trace
- Android Available

The PPC-10 offers a low power consumption Human Machine Interface option, with enough processing and graphics power to facilitate many smart control options. The PPC-10-3354 is a good choice for local machine control as well as a remote terminal to control your equipment. Log and monitor your entire facility through the network. Adding Bluetooth and WiFi technologies are as simple as connecting a USB dongle.

#### Specifications

##### **Panel PC Type:**

Open Frame PPC

##### Processor

##### **Processor:**

TI ARM Cortex A8 based Processor AM3354

##### **Clock Speed:**

1 GHz

##### **Real Time Clock:**

##### Memory

##### **Primary Flash:**

4GB eMMC Flash

**Secondary Flash:**

16MB Serial Data Flash & MicroSD Card

**Primary I/O****GPIO:**

16x programmable 3.3V I/O lines

**Video Out:**

2D/3D Accelerated Video Interface

**Audio:**

I2S Synchronous Serial Controller with Line In/Out

**Ethernet:**

1x 10/100 BaseT Ethernet

**USB:**

2x USB High Speed Host

1x USB High Speed OTG

**Serial Ports:**

4x Serial Ports (3x RS232 & 1x RS232/422/485)

**Watchdog:****Primary I/O Misc.:**

Wireless 802.11 b/g/n; Bluegiga [WF111-E] (WiFi antenna and cable are optional)

**Secondary I/O****CAN:**

1x CAN 2.0B Port

**Timers/ Counters/ PWM:**

Timer/Counters and Pulse Width Modulation (PWM) ports

**LPT Port:****Keypad:****PS/2:****Touch:**

Graphic LCD with Touch Screen

**Analog on****A/D:****A/D Channels:**

4

**A/D Resolution:**

12 bit

**D/A:****Dimensions****Dimensions:**

5.76 × 10.25 in

**Power Requirements****Voltage:**

12 V

**Power Misc.:**

- Power Supply Voltage: +12 to +28 Vdc.

- Typical current draw at 24V: 250 mA

#### Environmental

**Low Operating Temperature:**

0 C

**High Operating Temperature:**

50 C

**Upper Operating Humidity:**

90%

**Environmental Misc.:**

**\*Note:** Operating temperature limited by LCD

#### Pricing

**Product Variations:****PPC-10-3354-1R**

10" Open Frame Panel PC w/ Touchscreen, SoM-250GS & SoM-3354M. AM3354 1GHz, 512MB RAM, 4GB eMMC Flash, 4x COM, 3x USB2, 10/100 LAN, WIFI, 10" LCD

\$515.00

**Disk Interface:**

MicroSD card

---

**Source URL:** <http://emacinc.com/content/ppc-10-3354-arm-panel-pc>